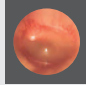
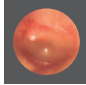
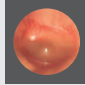
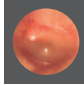
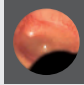


**BETTER**  
illumination.  
**SUPERIOR**  
colour rendering.  
**GREAT**  
magnification.

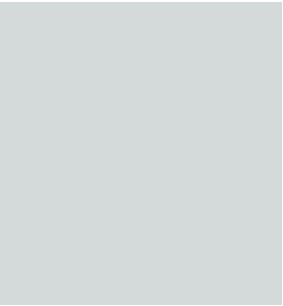
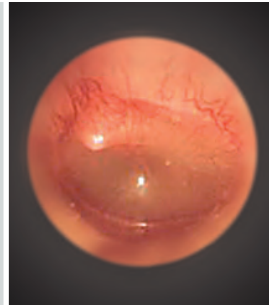
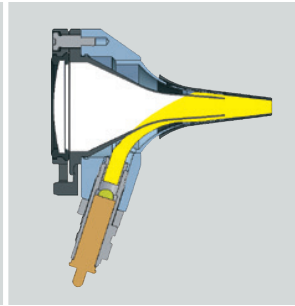


## HEINE otoscopes



	BETA 400 F.O.	BETA 200 F.O.	K180 F.O.	mini 3000 F.O.	mini 3000
Housing construction	Metal	Metal	Polycarbonate	Polycarbonate	Polycarbonate
Viewing window	Glass	Glass	Acrylic	Acrylic	Acrylic
Magnification	4.2x	3x	3x	3x	3x
Illumination	F.O. XHL or LED <sup>HQ</sup>	F.O. XHL or LED <sup>HQ</sup>	F.O. XHL	F.O. XHL or LED <sup>HQ</sup>	Direct XHL
					
Instrument size	Professional	Professional	Professional	Compact	Compact
Handle options / power sources	<ul style="list-style-type: none"> <li>• Battery handle (XHL only)</li> <li>• USB rechargeable handle</li> <li>• Rechargeable handle with table charger</li> <li>• EN 200 / EN 200-1</li> </ul>	<ul style="list-style-type: none"> <li>• Battery handle (XHL only)</li> <li>• USB rechargeable handle</li> <li>• Rechargeable handle with table charger</li> <li>• EN 200 / EN 200-1</li> </ul>	<ul style="list-style-type: none"> <li>• Battery handle</li> <li>• USB rechargeable handle</li> <li>• Rechargeable handle with table charger</li> <li>• EN 200 / EN 200-1</li> </ul>	<ul style="list-style-type: none"> <li>• Battery handle</li> <li>• Rechargeable handle with table charger</li> </ul>	<ul style="list-style-type: none"> <li>• Battery handle</li> <li>• Rechargeable handle with table charger</li> </ul>
Tips / specula	<ul style="list-style-type: none"> <li>• Reusable tips</li> <li>• AllSpec disposable tips</li> </ul>	<ul style="list-style-type: none"> <li>• Reusable tips</li> <li>• AllSpec disposable tips</li> </ul>	<ul style="list-style-type: none"> <li>• Reusable tips</li> <li>• AllSpec disposable tips</li> </ul>	<ul style="list-style-type: none"> <li>• Reusable tips</li> <li>• AllSpec disposable tips</li> </ul>	<ul style="list-style-type: none"> <li>• Reusable tips</li> <li>• AllSpec disposable tips</li> </ul>
Pneumatic testing of tympanum mobility	Insufflation port available	Insufflation port available	Insufflation port available	Insufflation port available, Insufflation port required	–
Catalogue page	007	009	011	012	016

High-quality fiber optics (F.O.) provide a homogeneous, reflex-free illumination.



HEINE BETA® 400 LED F.O. otoscope

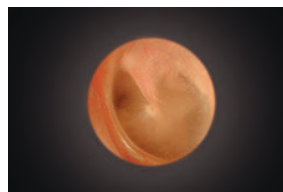
**4.2x magnification with LED<sup>HQ</sup> illumination**



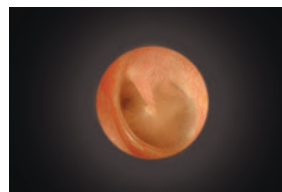
The otoscope has been designed with an all metal housing and scratch resistant glass lenses which guarantee a lifetime of maintenance-free use. LED with virtually unlimited hours of working life. No need to ever replace bulbs. Maintenance-free for a lifetime.



- ⋮ **Exclusive 4.2x magnification.** More detail of anatomical structures and easy recognition of foreign bodies.
- ⋮ **Exceptional depth of field.** Provides sharp spatial images in a convenient working range.
- ⋮ **Large field of view.** Gives the necessary overview and perfect orientation during examinations.
- ⋮ **Multi-coated precision optics.** Offer high resolution and distortion free images.
- ⋮ **Fiber optic illumination.** Ensures homogeneous, very bright illumination and an unobstructed view of the ear canal and tympanum.
- ⋮ **There's LED. And there's LED<sup>HQ</sup>.** HEINE has set a new standard which maintains that only the best is good enough, from the selection of materials to processing, from light intensity to dimmability, and from thermal management to a colour rendering index as high as possible. **That's what we call LED in HEINE Quality – or LED<sup>HQ</sup>.**
- ⋮ **Special optical interface to precisely integrate the LED illumination with the optical system** to ensure bright, homogeneous light during examinations.
- ⋮ **Patented, unique, stepless dimming** from 3% to 100% with practical one-finger operation.
- ⋮ **One hand operation.** The unique patented design allows the permanently attached optical system to be flipped open and out of the way, enabling instrumentation and ease of cleaning.
- ⋮ **Integrated insufflation port** offers tympanic mobility testing without air leakage. See order information accessories on page 015.
- ⋮ **Full functionality of the BETA 400 LED is guaranteed with BETA rechargeable handles and the EN 200 / EN 200-1 wall transformers.**
- ⋮ **A tip for a better future.** HEINE AllSpec disposable tips – made of recycled plastic. Read more on page 014.



BETA 400 LED F.O. otoscope with 4.2x magnification



Conventional otoscope

- ⋮ **Also available with XHL xenon halogen illumination.** Bright illumination and authentic colour rendering; for other technical specifications see BETA 400 LED F.O. otoscope.



HEINE BETA 400 diagnostic sets/kits

With XHL or LED<sup>HQ</sup> illumination



**Set includes: BETA 400 F.O. otoscope,**  
 1 set (4 pcs.) of reusable tips, 10 AllSpec disposable tips 4 mm Ø,  
 spare bulb for XHL version, hard case.

	2.5V XHL	3.5V XHL	LED
BETA battery handle	<b>B-143.10.118</b>		
★ BETA4 USB rechargeable handle with USB cord and plug-in power supply		<b>B-143.27.388</b>	<b>B-143.28.388</b>
BETA4 NT rechargeable handle with NT4 table charger		<b>B-143.23.420</b>	<b>B-143.24.420</b>



Without case

**Kit includes: BETA 400 F.O. otoscope,**  
 10 AllSpec disposable tips 4 mm Ø

	2.5V XHL	LED
BETA battery handle	<b>B-010.10.118</b>	
BETA4 USB rechargeable handle with USB cord and plug-in power supply		<b>B-010.28.388</b>
BETA4 NT rechargeable handle with NT4 table charger		<b>B-010.24.420</b>



**Set includes: BETA 400 F.O. otoscope and BETA 200 ophthalmoscope,**  
 1 set (4 pcs.) of reusable tips, 10 AllSpec disposable tips 4 mm Ø,  
 one spare bulb each for XHL version, hard case.

	2.5V XHL	3.5V XHL	LED
BETA battery handle	<b>A-153.10.118</b>		
BETA4 USB rechargeable handle with USB cord and plug-in power supply		<b>A-153.27.388</b>	<b>A-153.28.388</b>

Also available as a kit with  
 EN 200 wall transformer (page 129)



Without case

**Kit includes: BETA 400 F.O. otoscope and BETA 200 ophthalmoscope,**  
 1 set (4 pcs.) of reusable tips, 10 AllSpec disposable tips 4 mm Ø,  
 one spare bulb each for XHL version.

	3.5V XHL	LED
2x BETA4 NT rechargeable handle with NT4 table charger	<b>A-153.23.422</b>	<b>A-153.24.422</b>

∴ For further information on the HEINE BETA 200 ophthalmoscope, please see page 037.

HEINE BETA® 200 LED F.O. otoscope

**Sharpest images, perfect colour rendering and brightness in LED<sup>HQ</sup>**



The otoscope has been designed with an all metal housing and scratch resistant glass lenses which guarantee a lifetime of maintenance-free use. LED with virtually unlimited hours of working life. No need to ever replace bulbs. Maintenance-free for a lifetime.

- ∴ **3x magnification.** The multi-coated glass viewing window offers high resolution and distortion-free images.
- ∴ **Fiber optic illumination.** Ensures homogeneous, very bright illumination and an unobstructed view of the ear canal and tympanum.
- ∴ **There's LED. And there's LED<sup>HQ</sup>.** HEINE has set a new standard which maintains that only the best is good enough, from the selection of materials to processing, from light intensity to dimmability, and from thermal management to a colour rendering index as high as possible. **That's what we call LED in HEINE Quality – or LED<sup>HQ</sup>.**
- ∴ **Special optical interface to precisely integrate the LED illumination with the optical system** to ensure bright, homogeneous light during examinations.
- ∴ **Patented, unique, stepless dimming** from 3% to 100% with practical one-finger operation.
- ∴ **Viewing window is permanently attached**, and swivels for instrument use and complete cleaning of the instrument head.
- ∴ **Integrated insufflation port** offers tympanic mobility testing without air leakage. See order information accessories on page 015.
- ∴ **Full functionality of the BETA 200 LED is guaranteed with BETA rechargeable handles and the EN 200 / EN 200-1 wall transformers.**
  
- ∴ **Also available with XHL xenon halogen illumination.** Bright illumination and authentic colour rendering; for other technical specifications see BETA 200 LED F.O. otoscope.
  
- ∴ **A tip for a better future.** HEINE AllSpec disposable tips – made of recycled plastic. Read more on page 014.

HEINE BETA 200 diagnostic sets/kits

**With XHL or LED<sup>HQ</sup> illumination**

**Set includes: BETA 200 F.O. otoscope,**  
 1 set (4 pcs.) of reusable tips, 10 AllSpec disposable tips 4 mm Ø,  
 spare bulb for XHL version, hard case.



	2.5V XHL	3.5V XHL	LED
BETA battery handle	<b>B-141.10.118</b>		
BETA4 USB rechargeable handle with USB cord and plug-in power supply		<b>B-141.27.388</b>	<b>B-141.28.388</b>
BETA4 NT rechargeable handle with NT4 table charger		<b>B-141.23.420</b>	<b>B-141.24.420</b>

**Kit includes: BETA 200 F.O. otoscope,**  
 10 AllSpec disposable tips 4 mm Ø.



Without case

	2.5V XHL	LED
BETA battery handle	<b>B-011.10.118</b>	
BETA4 USB rechargeable handle with USB cord and plug-in power supply		<b>B-011.28.388</b>
BETA4 NT rechargeable handle with NT4 table charger		<b>B-011.24.420</b>



HEINE BETA 200 diagnostic sets/kits

With XHL or LED<sup>HQ</sup> illumination



**Set includes: BETA 200 F.O. otoscope and BETA 200 ophthalmoscope,**  
 1 set (4 pcs.) of reusable tips, 10 AllSpec disposable tips 4 mm Ø,  
 one spare bulb each for XHL version, hard case.

	2.5V XHL	3.5V XHL	LED
BETA battery handle	<b>A-132.10.118</b>		
BETA4 USB rechargeable handle with USB cord and plug-in power supply		<b>A-132.27.388</b>	<b>A-132.28.388</b>

Also available as a kit with  
**EN 200 wall transformer (page 129)**



Without case

**Kit includes: BETA 200 F.O. otoscope and BETA 200 ophthalmoscope,**  
 1 set (4 pcs.) of reusable tips, 10 AllSpec disposable tips 4 mm Ø,  
 one spare bulb each for XHL version.

	3.5V XHL	LED
2x BETA4 NT rechargeable handle with NT4 table charger	<b>A-132.23.422</b>	<b>A-132.24.422</b>

∴ For further information on the HEINE BETA 200 ophthalmoscope, please see page 037.

HEINE K180 F.O. otoscope

The standard, all around fiber optic otoscope



Otoscope with fiber optic (F.O.) illumination constructed of light, high-impact polycarbonate.

- ∴ **Fiber optic illumination.** Ensures homogeneous, very bright illumination and an unobstructed view of the ear canal and tympanum.
- ∴ **Polycarbonate construction.** Shock-resistant.
- ∴ **XHL xenon halogen technology.** Extremely bright, white light.
- ∴ **Acrylic viewing window with 3x magnification.** Sharply-focused distortion-free image.
- ∴ **Swivelling viewing window built into instrument.** Useful for instrumentation, cannot be mislaid.
- ∴ **Insufflation port.** Reliable test of tympanic mobility. See order information accessories on page 015.
- ∴ **A tip for a better future.** HEINE AllSpec disposable tips – made of recycled plastic. Read more on page 014.

HEINE K180 diagnostic sets/kits



**Set includes: K180 F.O. otoscope,**  
1 set (4 pcs.) of reusable tips, soft pouch.

	2.5V XHL	3.5V XHL
BETA battery handle	<b>B-181.10.118</b>	
★ BETA4 USB rechargeable handle with USB cord and plug-in power supply		<b>B-181.27.388</b>
BETA4 NT rechargeable handle with NT4 table charger		<b>B-181.23.420</b>



Without case

K180 F.O. otoscope with	2.5V XHL	3.5V XHL
BETA battery handle	<b>B-012.10.118</b>	
BETA4 USB rechargeable handle with USB cord and plug-in power supply		<b>B-012.27.388</b>

**Also available as a kit with EN 200 wall transformer (page 129)**

**Set includes: K180 F.O. otoscope and K180 ophthalmoscope,**  
1 set (4 pcs.) of reusable tips, hard case.



	2.5V XHL	3.5V XHL
BETA battery handle	<b>A-279.10.118</b>	
BETA4 USB rechargeable handle with USB cord and plug-in power supply		<b>A-279.27.388</b>
BETA4 NT rechargeable handle with NT4 table charger		<b>A-279.23.420</b>

∴ **For further information on the HEINE K180 ophthalmoscope, please see page 040.**



## HEINE mini 3000® F.O. otoscope

### Compact pocket otoscope with XHL or LED<sup>HQ</sup> illumination



Modern pocket otoscope with bright illumination and accurate colour rendering. Unique design, compact and powerful. Can only be used with the mini 3000 handle system. Available in black or blue.



#### Features for both instruments (XHL and LED):

- ∴ **20,000 ON/OFF** switch cycles guaranteed.
- ∴ **Distal fiber optic (F.O.) illumination:** Reflex-free illumination of tympanum and ear canal.
- ∴ **Viewing window with 3x magnification and** optimized casing surface for razor-sharp images and minimal reflection. Swivelling viewing window built into instrument.
- ∴ **Pneumatic testing** of tympanum mobility by using the insufflation port and an optional connector. See order information accessories on page 015.
- ∴ **Attachment clip with integrated on/off switch.** Switches off automatically when returned to the pocket.
- ∴ **Replaceable batteries.** Size AA, or optional rechargeable battery with mini NT table charger.\*
- ∴ **2-piece handle and head.** Easy to maintain, flexible.
- ∴ **Award-winning design.** Maximum quality with minimum dimensions.
- ∴ **A tip for a better future.** HEINE AllSpec disposable tips – made of recycled plastic. Read more on page 014.

#### Special features of the LED instruments:

- ∴ **Maintenance-free,** no need to ever exchange the LED.
- ∴ LED thermal management for a **consistent light output throughout the whole working life.**
- ∴ **There's LED. And there's LED<sup>HQ</sup>.** HEINE has set a new standard which maintains that only the best is good enough, from the selection of materials to processing, from light intensity and thermal management to a colour rendering index as high as possible. **That's what we call LED in HEINE Quality – or LED<sup>HQ</sup>.**
- ∴ **Twice as bright as** xenon halogen instruments.
- ∴ **Exclusive battery performance indicator:** When the instrument is switched on, the maximum light intensity is shown, then the light intensity is regulated down to the level that corresponds to the current charge status of the battery so you know when your batteries need changing.
- ∴ **Fade-out feature:** brightness reduces slowly even with low residual capacity, for even more efficient use of dry or rechargeable batteries.
- ∴ **Operating time typ. 10 hours.** The batteries need to be changed less often and the rechargeable batteries last longer.



\*To upgrade to a rechargeable instrument with mini NT table charger, please see page 132.



HEINE mini 3000 pocket instruments – a complete range of quality diagnostic instruments for your pocket. Available in black or blue. Please specify the colour you prefer when ordering. If not otherwise specified, we will supply black instruments.



HEINE mini 3000 F.O. diagnostic sets/kits



[01]

**Set/kit includes: mini 3000 F.O. otoscope,**  
 1 set (4 pcs.) of reusable tips, 10 AllSpec disposable tips 4 mm Ø  
 Optionally with or without hard case.

	2.5V XHL	2.5V LED
mini 3000 battery handle with batteries, hard case [01]	D-851.10.021	D-885.20.021
mini 3000 battery handle with batteries, without case	D-001.70.120	D-008.70.120



[02]

Without case

**Kit includes: mini 3000 F.O. otoscope,**  
 10 AllSpec disposable tips 4 mm Ø



	2.5V XHL	2.5V LED
mini 3000 battery handle with batteries [02]	D-001.70.110	D-008.70.110
mini 3000 rechargeable handle (please order mini NT table charger separately)	D-001.70.301	D-008.70.301



**Set includes: mini 3000 F.O. otoscope and mini 3000 ophthalmoscope,**  
 1 set (4 pcs.) of reusable tips, 10 AllSpec disposable tips 4 mm Ø,  
 hard case.

	2.5V XHL	2.5V LED
2 mini 3000 battery handles with batteries	D-873.11.021	D-886.11.021



Without case

**Kit includes: mini 3000 F.O. otoscope and mini 3000 ophthalmoscope,**  
 10 AllSpec disposable tips 4 mm Ø

	2.5V XHL	2.5V LED
2 mini 3000 rechargeable handles and mini NT table charger	D-859.11.022*	D-860.11.022*

\*with this Art. No. only available in black

∴ For further information on the HEINE mini 3000 ophthalmoscope, please see page 042.



### HEINE AllSpec® disposable tips

#### Made of recycled plastic



Ø 2.5mm    Ø 4mm



[01]



[02]



[03]

- ∴ The renowned **HEINE Quality** is now saving tons of CO<sub>2</sub>.
- ∴ For a particularly secure fit, best light transmission and hygiene.
- ∴ **Assured quality.** No sharp edges.
- ∴ Read about what else we're doing for the environment here: [www.heine.com](http://www.heine.com)

#### AllSpec disposable tips for BETA 400, BETA 200, K180, mini 3000 F.O., mini 3000 otoscopes

Pack of 1000 pcs. Ø 2.5 mm (infants) [01]	B-000.11.128
Pack of 1000 pcs. Ø 4 mm (adults) [01]	B-000.11.127
Case of 10 packs of 1000 pcs, Ø 2,5 mm (infants)	B-000.11.138
Case of 10 packs of 1000 pcs, Ø 4 mm (adults)	B-000.11.137

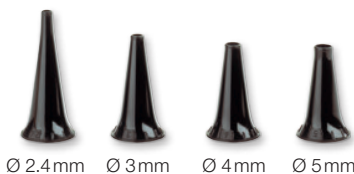
Dispenser pack, single, of 250 tips, Ø 2.5 mm (infants) [02]	B-000.11.153
Dispenser pack, single, of 250 tips, Ø 4 mm (adults) [02]	B-000.11.152
Case of 10 dispenser packs of 250 tips, Ø 2.5 mm (infants)	B-000.11.151
Case of 10 dispenser packs of 250 tips, Ø 4 mm (adults)	B-000.11.150

- ∴ **AllSpec tip dispenser** incl. tips Ø 2.5mm and 4mm.  
**The right size, visible and instantly available.** A clean new tip for each and every patient.

AllSpec tip dispenser (2x 50 tips) [03]	B-000.11.149
---	--------------

⊗: Single use only.

### Reusable tips



Ø 2.4mm    Ø 3mm    Ø 4mm    Ø 5mm

- ∴ For the most secure fit, best light transmission and hygiene, we recommend the use of **HEINE otoscope Tips.**
- ∴ **Made of high-density SANALONS plastic with smooth external finish.** Easy to clean. Common germicides can be used. Autoclavable at up to 134 °C.
- ∴ **Ergonomic shape.** Painless atraumatic insertion.

Reusable tips for BETA 400, BETA 200, K180, mini 3000 F.O., mini 3000 otoscopes	1 piece	50 pieces
Reusable tip Ø 2.4 mm	B-000.11.107	B-000.11.207
Reusable tip Ø 3.0 mm	B-000.11.108	B-000.11.208
Reusable tip Ø 4.0 mm	B-000.11.109	B-000.11.209
Reusable tip Ø 5.0 mm	B-000.11.110	B-000.11.210

1 set = 4 pcs. reusable tips SANALONS Ø 2.4/3/4/5 mm	B-000.11.111
--	--------------

### Soft disposable tips



Ø 3mm    Ø 5mm

- ∴ Fits over the end of the tip to protect the auditory canal.

Soft disposable tips	
Soft disposable tip Ø 3 mm 40 pcs./1 pack	B-000.11.141
Soft disposable tip Ø 5 mm 40 pcs./1 pack	B-000.11.142

⊗: Single use only.

Further articles / accessories

**HEINE F.O. otoscopes**



<b>BETA 400 F.O. otoscope head</b>	2.5V XHL	3.5V XHL	LED
with 4 reusable tips, without handle	<b>B-001.11.401</b>	<b>B-002.11.401</b>	<b>B-008.11.401</b>
without handle and without accessories	<b>B-001.11.400</b>	<b>B-002.11.400</b>	<b>B-008.11.400</b>



<b>BETA 200 F.O. otoscope head</b>	2.5V XHL	3.5V XHL	LED
with 4 reusable tips, without handle	<b>B-001.11.501</b>	<b>B-002.11.501</b>	<b>B-008.11.501</b>
without handle and without accessories	<b>B-001.11.500</b>	<b>B-002.11.500</b>	<b>B-008.11.500</b>



<b>K180 F.O. otoscope head</b>	2.5V XHL	3.5V XHL
with 4 reusable tips, without handle	<b>B-001.11.551</b>	<b>B-002.11.551</b>
without handle and without accessories	<b>B-001.11.550</b>	<b>B-002.11.550</b>



<b>mini 3000 F.O. otoscope head</b>	2.5V XHL	2.5V LED
without handle and without accessories *	<b>D-001.70.106</b>	<b>D-008.70.106</b>

\* Available in black or blue. Please specify the colour you prefer when ordering. If not otherwise specified, we will supply black instruments.



<b>Spare bulb for BETA 400, BETA 200 and K180</b>	2.5V XHL	3.5V XHL
XHL xenon halogen spare bulb	<b>X-001.88.077</b>	<b>X-002.88.078</b>

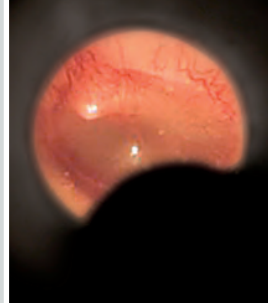
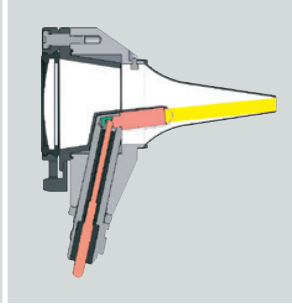


<b>Spare bulb for mini 3000 F.O.</b>	2.5V XHL
XHL xenon halogen spare bulb	<b>X-001.88.105</b>



<b>Insufflation bulb for pneumatic testing</b>	
Insufflation bulb for BETA 400, BETA 200 and K180 otoscopes	<b>B-000.11.240</b>
Insufflation bulb for mini 3000 F.O. otoscope with connector	<b>D-000.80.102</b>
Insufflation port connector for mini 3000 F.O. otoscope	<b>D-000.80.101</b>

Bright XHL xenon halogen  
direct illumination.



## HEINE mini 3000® otoscope

### Compact pocket otoscope with direct illumination



Modern pocket otoscope in a unique, compact design. Can only be used with the mini 3000 handle system. Available in black or blue.

- ∴ **Instrument head matt-black inside.** Eliminates reflexes.
- ∴ **Enhanced XHL xenon halogen technology with 100% more light compared with conventional bulbs.** Very bright, concentrated white light for perfect illumination.
- ∴ **2-piece handle and head.** Easy to maintain, flexible. Compatible with other mini 3000 instrument heads.
- ∴ **Viewing window with 3x magnification** and optimised casing surface for razor-sharp images and minimal reflection.
- ∴ **Swivelling viewing window built into instrument.** Useful for instrumentation, cannot be mislaid.
- ∴ **High-quality handle: Chrome-finished upper section/refined plastic.** Shockproof, sturdy, non-slip.
- ∴ **Attachment clip with integrated on/off switch.** Secure. Switches off automatically when returned to the pocket. 20,000 switch cycles guaranteed.
- ∴ **Replaceable batteries.** Size AA, or optional rechargeable battery with mini NT table charger\*.
- ∴ **A tip for a better future.** HEINE AllSpec disposable tips – made of recycled plastic. Read more on page 014.



\*To upgrade to a rechargeable instrument with mini NT table charger, please see page 132.

Available in black or blue. Please specify the colour you prefer when ordering. If not otherwise specified, we will supply black instruments.



## HEINE mini 3000 diagnostic sets/kits



[01]



[02]

Without case

**Set/kit includes: mini 3000 otoscope,**

1 set (4 pcs.) reusable tips, 10 AllSpec disposable tips 4 mm Ø

	2.5V XHL
mini 3000 battery handle with batteries, hard case [01]	<b>D-851.20.021</b>
★ mini 3000 battery handle with batteries, without case [02]	<b>D-001.70.220</b>
mini 3000 battery handle with batteries, without case, without reusable tips	<b>D-001.70.210</b>

**Set includes: mini 3000 otoscope, mini 3000 ophthalmoscope,**

1 set (4 pcs.) reusable tips, 10 AllSpec disposable tips 4 mm Ø, hard case.

	2.5V XHL
2 mini 3000 battery handles with batteries	<b>D-873.21.021</b>

∴ For further information on the HEINE mini 3000 ophthalmoscope, please see page 042.



Further articles / accessories

**HEINE otoscopes**



<b>mini 3000 otoscope head</b>	2.5V XHL	
without handle and without accessories *	<b>D-001.70.206</b>	

\* Available in black or blue. Please specify the colour you prefer when ordering. If not otherwise specified, we will supply black instruments.



<b>Spare bulb for mini 3000</b>	2.5V XHL	
XHL xenon halogen spare bulb	<b>X-001.88.110</b>	



<b>Replacement aperture cover for BETA 100* and K100*</b>		
Aperture cover for bulb, reduces reflexes	<b>B-000.11.212</b>	



<b>Spare bulb for BETA 100* and K100*</b>	2.5V XHL	3.5V XHL
XHL xenon halogen spare bulb	<b>X-001.88.037</b>	<b>X-002.88.049</b>



<b>Tip adaptor for BETA 100* and K100*</b>		
Adaptor for AllSpec disposable tips (p. 014) for use with diagnostic otoscope (BETA 100, K100)	<b>B-000.11.306</b>	



<b>Insufflation bulb for BETA 100* and K100*</b>		
Insufflation bulb for pneumatic testing	<b>B-000.11.240</b>	



Ø 2.2mm    Ø 2.8mm    Ø 3.5mm



Ø 4.5mm    Ø 5.5mm    Ø 10mm

<b>Reusable specula for BETA 100* and K100*</b>		
1 set = 5 ear specula and 1 nose speculum	<b>B-000.11.221</b>	
3 specula Ø 3.5/4.5/5.5mm	<b>B-000.11.222</b>	
Ear speculum Ø 2.2mm	<b>B-000.11.215</b>	
Ear speculum Ø 2.8mm	<b>B-000.11.216</b>	
Ear speculum Ø 3.5mm	<b>B-000.11.217</b>	
Ear speculum Ø 4.5mm	<b>B-000.11.218</b>	
Ear speculum Ø 5.5mm	<b>B-000.11.219</b>	
Nose speculum Ø 10mm	<b>B-000.11.220</b>	



Ø 2.5mm    Ø 4mm

<b>UniSpec disposable specula for BETA 100* and K100*</b>		
Pack of 1000, Ø 2.5mm (infants) 1000 pcs./1 pack	<b>B-000.11.242</b>	
Pack of 1000, Ø 4mm (adults) 1000 pcs./1 pack	<b>B-000.11.241</b>	
UniSpec tip dispenser	<b>B-000.11.146</b>	

⊗: Single use only.

\* instrument no longer available

### Tongue-blade holder

#### For wooden tongue-blades



Without case

- ∴ **XHL xenon halogen technology.** Concentrated illumination of oral cavity and pharynx.
- ∴ **Light-guide for bulb.** Avoids dazzle.

Tongue-blade holder with	2.5V XHL	3.5V XHL
BETA battery handle	<b>B-015.10.118</b>	
★ BETA4 USB rechargeable handle with USB Cord and plug-in power supply		<b>B-015.27.388</b>
BETA4 NT rechargeable handle (without NT4 table charger)		<b>B-015.23.396</b>

### Tongue-blade holder

#### With blade ejector for use with HEINE disposable tongue-blades



Without case

- ∴ **XHL xenon halogen technology.** Concentrated illumination of oral cavity and pharynx.
- ∴ **Light-guide for bulb.** Avoids dazzle.
- ∴ **Blade ejector.** No need to touch used blades.
- ∴ **Only for HEINE disposable plastic tongue-blades.** Strong and hygienic.

Tongue-blade holder with	2.5V XHL	3.5V XHL
BETA battery handle	<b>B-016.10.118</b>	
★ BETA4 USB rechargeable handle with USB Cord and plug-in power supply		<b>B-016.27.388</b>
BETA4 NT rechargeable handle (without NT4 table charger)		<b>B-016.23.396</b>

### HEINE mini 3000® tongue-blade holder

#### With blade ejector for HEINE disposable tongue-blades



Without case

- ∴ **Finger-tip pressure releases the used blade.** No need to touch the blade after use.
- ∴ **XHL xenon halogen technology.** Concentrated illumination of oral cavity and pharynx.
- ∴ **Only for HEINE disposable tongue-blades.** Strong and hygienic.

mini 3000 tongue-blade holder with	2.5V XHL
★ mini 3000 battery handle* and 5 disposable blades, with batteries	<b>D-001.74.118</b>

\* Available in black or blue. Please specify the colour you prefer when ordering. If not otherwise specified, we will supply black instruments.



## Further articles / accessories

## HEINE tongue-blade holder



<b>Tongue-blade holder head for wooden tongue-blades</b>	2.5V XHL	3.5V XHL
without handle and without accessories	<b>B-001.12.302</b>	<b>B-002.12.302</b>



<b>Tongue-blade holder head for disposable tongue-blades</b>	2.5V XHL	3.5V XHL
without handle and without accessories	<b>B-001.12.305</b>	<b>B-002.12.305</b>



<b>mini 3000 tongue-blade holder head</b>	2.5V XHL	
without handle and without accessories		<b>D-001.74.100</b>



<b>Spare bulb for tongue-blade holder</b>	2.5V XHL	3.5V XHL
XHL xenon halogen spare bulb	<b>X-001.88.037</b>	<b>X-002.88.049</b>



<b>Replacement light-guide for tongue-blade holder</b>		
Light-guide for bulb		<b>B-000.12.308</b>



<b>Spare bulb for mini 3000 tongue-blade holder</b>	2.5V XHL	
XHL xenon halogen spare bulb	<b>X-001.88.037</b>	



<b>Disposable plastic tongue-blades</b>		
Pack of 100 disposable plastic tongue-blades		<b>B-000.12.304</b>



HEINE mini-c hand-held examination light / mini-e ear light

With unique LED<sup>HQ</sup>



Robust, durable examination light in a compact pocket size.  
Bright, concentrated light – with unique LED<sup>HQ</sup>.

- ⌘ **Safe examination of the eyes** due to tested photobiological safety.
- ⌘ **Comfortable and ergonomic.**
- ⌘ **Natural colours and virtually unlimited operating life of the LED<sup>HQ</sup>.**
- ⌘ **Switches off automatically when placed in the pocket.**
- ⌘ **20,000 on/off cycles guaranteed.**
- ⌘ **Replaceable batteries** (size: AAA).



[01]

[02]

Without case

	LED
mini-c hand-held examination light incl. batteries [01]	D-008.73.109
mini-e ear light incl. batteries [02] for otoplasty. The ear light is used to ensure that hearing aids fit correctly.	D-008.73.103

HEINE mini 3000<sup>®</sup> clip lamp

Compact, long-life pocket diagnostic light

Sturdy, long-life pocket diagnostic light in a compact, modern design with chrome head. Bright, concentrated light thanks to unique XHL xenon halogen lens-bulb. Can only be used with the mini 3000 handle system. Handle available in black or blue.

- ⌘ **Compact, oval, attractive light.** Lies ergonomically in the hand.
- ⌘ **2-piece handle and head.** Easy to maintain, flexible. Compatible with other mini 3000 instrument heads.
- ⌘ **Enhanced XHL xenon halogen lens-bulb with 100% more light compared to conventional bulbs.** Bright, focused light.
- ⌘ **High-quality handle: Chrome-finish upper section/refined plastic.** Shockproof, sturdy, non-slip.
- ⌘ **Attachment clip with integrated on/off switch.** Secure. Switches off automatically when replaced in the pocket. 20,000 switch cycles guaranteed.
- ⌘ **Replaceable batteries.** Size AA, or optional rechargeable battery with mini NT table charger\*.
- ⌘ **Ear light for otoplasty [02].** The ear light is used to ensure that hearing aids fit correctly. See order information accessories on page 023.



[01]

[02]

Without case

mini 3000 clip lamp with	2.5V XHL
mini 3000 battery handle with batteries [01]	D-001.73.131



HEINE mini 3000 pocket instruments – a complete range of quality diagnostic instruments for your pocket. HEINE mini 3000 clip lamp attachments are only available with a chrome head. Available in black or blue. Please specify the colour you prefer when ordering. If not otherwise specified, we will supply black instruments.

## HEINE mini 3000® combi lamp

### Compact, all purpose illuminator with integrated tongue-blade holder



Without case

Sturdy, long-life pocket diagnostic light in a compact, modern design. Bright, concentrated light thanks to unique XHL xenon halogen lens-bulb.

Can only be used with the mini 3000 handle system. Available in black or blue.

- ∴ **Many applications.** Can be used as a general illuminator and as an illuminated tongue-blade holder for wooden blades and HEINE disposable blades.
- ∴ **2-piece handle and head.** Easy to maintain, flexible. Compatible with other mini 3000 instrument heads.
- ∴ **Enhanced XHL xenon halogen lens-bulb with 100% more light compared with conventional bulbs.** Bright, focused light.
- ∴ **High-quality handle: Chrome-finish upper section/refined plastic.** Shockproof, sturdy, non-slip.
- ∴ **Attachment clip with integrated on/off switch.** Secure. Switches off automatically when replaced in the pocket. 20,000 switch cycles guaranteed.
- ∴ **Replaceable batteries.** Size AA, or optional rechargeable battery with mini NT table charger\*.

mini 3000 combi lamp with	2.5V XHL
mini 3000 battery handle with batteries and 5 disposable blades	D-001.76.120



\*To upgrade to a rechargeable instrument with mini NT table charger, please see page 132.

Further articles / accessories

**HEINE pocket diagnostic lights**



<b>mini 3000 clip lamp head</b>	2.5V XHL
without handle and without accessories	<b>D-001.73.130</b>



<b>mini 3000 combi lamp head</b>	2.5V XHL
without handle and without accessories*	<b>D-001.76.101</b>

\* Available in black or blue. Please specify the colour you prefer when ordering. If not otherwise specified, we will supply black instruments.



<b>Spare bulb for mini 3000 clip lamp and combi lamp</b>	2.5V XHL
XHL xenon halogen spare bulb	<b>X-001.88.107</b>



<b>Ear light for mini 3000 clip lamp</b>	
Ear light, 6 pieces in blister pack	<b>D-000.73.105</b>



<b>Disposable tongue-blades for mini 3000 combi lamp</b>	
Pack of 100 disposable tongue-blades	<b>B-000.12.304</b>

## HEINE veterinary ENT diagnostic instruments



	G100 slit illumination head	BETA 200 VET F.O. otoscope
Housing construction	Metal	Metal
Magnification	1.6x	2.5x
Illumination	F.O. XHL or LED <sup>HQ</sup>	F.O. XHL or LED <sup>HQ</sup>
Instrument size	Professional	Professional
Handle options / power sources	<ul style="list-style-type: none"> <li>• Battery handle (XHL only)</li> <li>• USB rechargeable handle</li> <li>• Rechargeable handle with table charger</li> <li>• EN 200 / EN 200-1</li> </ul>	<ul style="list-style-type: none"> <li>• Battery handle (XHL only)</li> <li>• USB rechargeable handle</li> <li>• Rechargeable handle with table charger</li> <li>• EN 200 / EN 200-1</li> </ul>
Tips / Specula	<ul style="list-style-type: none"> <li>• Long, closed specula</li> <li>• Slit metal specula, open</li> <li>• Spreadable speculum</li> <li>• Short, closed specula</li> <li>• UniSpec VET disposable tips with adaptor</li> </ul>	<ul style="list-style-type: none"> <li>• VET reusable specula</li> </ul>
Pneumatic testing of tympanum mobility	–	Insufflation port available
Catalogue page	025	027

HEINE G100 LED slit illumination head

With LED illumination in HEINE Quality – LED<sup>HQ</sup>



Instrument head with solid metal construction and scratch-resistant swivel lens guarantee a lifetime of maintenance-free use. LED with virtually unlimited hours of working life. No need to ever replace bulbs.

- ∴ **Slit illumination head.** Allows optimal instrumentation with magnification and illumination. Clears the way for access during examinations.
- ∴ **Multi-coated, scratch-resistant swivel lens with 1.6x magnification** provides a high-resolution image.
- ∴ **Fiber optic illumination.** Ensures homogeneous, very bright illumination and an unobstructed view of the ear canal and tympanum.
- ∴ **There's LED. And there's LED<sup>HQ</sup>.** HEINE has set a new standard which maintains that only the best is good enough, from the selection of materials to processing, from light intensity to dimmability, and from thermal management to a colour rendering index as high as possible. **That's what we call LED in HEINE Quality – or LED<sup>HQ</sup>.**
- ∴ **Special optical interface to precisely integrate the LED illumination with the optical system** to ensure bright homogeneous light during examinations.
- ∴ **Patented, unique, stepless dimming** from 3% to 100% with practical one-finger operation.
- ∴ **Easy cleaning.** Round edges allow easy disinfection, also with standard disinfectants.
- ∴ **Double bayonet lock for specula.** specula mounted firmly by double lock.
- ∴ **Full functionality of the G100 LED slit illumination head is guaranteed with BETA rechargeable handles and the EN 200 / EN 200-1 wall transformers.**
  
- ∴ **Also available with XHL xenon halogen illumination.** Bright illumination and authentic colour rendering; for other technical specifications see G100 LED slit illumination head.

HEINE G100 diagnostic kit



Without case

[01]

G100 slit illumination head with	LED
BETA4 USB rechargeable handle with USB cord and plug-in power supply [01]	<b>G-010.28.388</b>
BETA4 NT rechargeable handle with NT4 table charger	<b>G-010.24.420</b>



HEINE veterinary diagnostic sets

With XHL or LED<sup>HQ</sup> illumination



**Set includes: G100 slit illumination head,**

1 set long, closed specula (57mm x 4mm Ø, 65mm x 6mm Ø, 90mm x 7mm Ø),  
1 spare bulb for XHL version, hard case.



	2.5V XHL	3.5V XHL	LED
BETA battery handle	<b>G-112.10.118</b>		
BETA4 USB rechargeable handle with USB cord and plug-in power supply		<b>G-112.27.388</b>	<b>G-112.28.388</b>
BETA4 NT rechargeable handle with NT4 table charger		<b>G-112.23.420</b>	<b>G-112.24.420</b>



**Set includes: G100 slit illumination head, ophthalmoscope BETA 200,**

1 set long, closed specula (57mm x 4mm Ø, 65mm x 6mm Ø, 90mm x 7mm Ø),  
1 spare bulb each for XHL version, hard case.

	2.5V XHL	3.5V XHL	LED
BETA battery handle	<b>G-148.10.118</b>		
BETA4 USB rechargeable handle with USB cord and plug-in power supply		<b>G-148.27.388</b>	<b>G-148.28.388</b>
BETA4 NT rechargeable handle with NT4 table charger		<b>G-148.23.420</b>	<b>G-148.24.420</b>

∴ For further information on the HEINE BETA 200 ophthalmoscope, please see page 037.

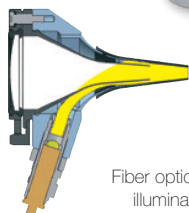
HEINE BETA® 200 LED VET F.O. otoscope

Veterinary otoscope with LED<sup>HQ</sup> illumination



The otoscope has been designed with an all metal housing and scratch resistant glass lenses which guarantee a lifetime of maintenance-free use. LED with virtually unlimited hours of working life. No need to ever replace bulbs. Maintenance-free for a lifetime.

- ∴ **Large, scratch-resistant glass viewing window with 2.5x magnification.** Specially developed lens for veterinary medicine. Focal length is designed specifically for use with longer specula.
- ∴ **Fiber optic illumination.** Ensures homogeneous, very bright illumination and an unobstructed view of the ear canal and tympanum.
- ∴ **There's LED. And there's LED<sup>HQ</sup>.** HEINE has set a new standard which maintains that only the best is good enough, from the selection of materials to processing, from light intensity to dimmability, and from thermal management to a colour rendering index as high as possible. **That's what we call LED in HEINE Quality – or LED<sup>HQ</sup>.**
- ∴ **Special optical interface to precisely integrate the LED illumination with the optical system** to ensure bright homogeneous light during examinations.
- ∴ **Patented, unique, stepless dimming** from 3% to 100% with practical one-finger operation.
- ∴ **Swivelling viewing window built into instrument.** Useful for instrumentation, cannot be mislaid.
- ∴ **Insufflation port.** Reliable test of tympanic mobility.
- ∴ **For use with reusable VET specula.** See order information accessories on pages 029–031.
- ∴ **Full functionality of the BETA 200 LED VET is guaranteed with BETA rechargeable handles and the EN 200 / EN 200-1 wall transformers.**



Fiber optic (F.O.) illumination

∴ **Also available with XHL xenon halogen illumination.** Bright illumination and authentic colour rendering; for other technical specifications see BETA 200 LED VET F.O. otoscope.

HEINE BETA 200 VET diagnostic kit

With XHL or LED<sup>HQ</sup> illumination



Without case

[01]



BETA 200 VET F.O. otoscope with	2.5V XHL	3.5V XHL	LED
BETA battery handle	G-011.10.118		
★ BETA4 USB rechargeable handle with USB cord and plug-in power supply [01]		G-011.27.388	G-011.28.388
BETA4 NT rechargeable handle with NT4 table charger		G-011.23.420	G-011.24.420

## Long, closed metal specula



- ∴ **Metal construction, chrome-plated.** Easy to clean, disinfect and sterilize.
- ∴ **Double bayonet lock for specula.** Firm mounting of specula to head.

### Closed specula for G100/G100 LED slit illumination head

57 mm long / Ø 4 mm	G-000.21.330
65 mm long / Ø 6 mm	G-000.21.331
90 mm long / Ø 7 mm	G-000.21.332
170 mm long / Ø 10 mm	G-000.21.350

## Slit metal specula, open



- ∴ **High-quality chrome-plated metal construction.** Easy to clean, disinfect and sterilize.
- ∴ **Matte internal surfaces.** Reduced reflexes.
- ∴ **60° opening with rounded edges.** Ideal for instrumentation, atraumatic insertion.
- ∴ **Double bayonet fitting.** Positive fit.

### Slit metal specula for G100/G100 LED slit illumination head

65 mm long / Ø 6 mm	G-000.21.341
90 mm long / Ø 7 mm	G-000.21.342

## Spreadable speculum for slit illumination head



This versatile instrument is widely used as a universal speculum for small animals.

- ∴ **Distal jaw opens up to 28 mm with 4 click-stops.** Useful for examination and therapy.
- ∴ **High-quality, chrome-plated metal construction.** Easy to clean, disinfect and sterilize.
- ∴ **Matte internal surfaces.** Avoids reflexes.
- ∴ **Oval branches with rounded edges.** Ideal for instrumentation, atraumatic.
- ∴ **2 bayonet locks.** Firm mounting of spreadable Speculum to head.

### Spreadable speculum for G100/G100 LED slit illumination head

Spreadable speculum for slit illumination head (95 mm long)	G-000.21.360
---	--------------



Short, closed specula



- **Made of high-density SANALON S with a smooth external surface.** Dust and germs are easily removed. Common germicides can be used. Autoclavable at up to 134 °C.
- **Ergonomic shape.** Painless atraumatic insertion.
- **Integral metal ring with 2 bayonet locks.** Firm mounting of specula to head.

**Short, closed SANALON S specula  
for G100/G100 LED slit illumination head and BETA 100 VET\* otoscope**

1 set = 5 veterinary specula in SANALON S	G-000.21.316
40mm long / Ø 2.2mm	G-000.21.310
40mm long / Ø 2.8mm	G-000.21.311
40mm long / Ø 3.5mm	G-000.21.312
40mm long / Ø 4.5mm	G-000.21.313
40mm long / Ø 5.5mm	G-000.21.314

HEINE reusable VET specula



A VET adaptor [01] is required for use on the BETA 100 VET\*.

- **Made of high-density SANALON S with a smooth external surface.** Dust and germs are easily removed. Disinfection and autoclaving at up to 134 °C is possible.
- **Ergonomic shape.** Atraumatic.
- **Convenient fixation system.** Positive fit to otoscope head.

**Reusable SANALON S specula  
for BETA 200 VET and BETA 100 VET\* with adaptor**

1 set = 3 reusable SANALON S specula	G-000.21.213
61 mm long / Ø 4 mm	G-000.21.210
61 mm long / Ø 6 mm	G-000.21.211
61 mm long / Ø 9 mm	G-000.21.212

Adaptor for reusable SANALON S VET specula [01]	G-000.21.214
---	--------------

\* instrument no longer available



HEINE UniSpec® disposable specula



The adaptor illustrated [01] is necessary when using UniSpec specula with the G100/G100 LED slit illumination head.

- ∅: **No cleaning necessary.** Saves time.
- ∅: **Hygienic and safe.** Eliminates cross-infection.
- ∅: **Packed in units of 1000.** Assures a competitive price.
- ∅: **Original HEINE design and manufacture.** Guaranteed good fit to the instrument head.

**UniSpec disposable specula**

for BETA 100 VET\*, operating otoscope\* and G100/G100 LED slit illumination head

Pack of 1000 UniSpec disposable specula Ø 2.5 mm	B-000.11.242
Pack of 1000 UniSpec disposable specula Ø 4 mm	B-000.11.241

Adaptor for use with slit illumination head [01]	G-000.21.302
UniSpec tip dispenser	B-000.11.146

∅: Single use only.

Further articles / accessories

HEINE veterinary ENT diagnostic instruments



**Reusable specula for operating otoscope\***

1 set = 5 ear specula and 1 nose speculum	B-000.11.221
3 specula Ø 3.5/4.5/5.5mm	B-000.11.222
Ear speculum Ø 2.2mm	B-000.11.215
Ear speculum Ø 2.8mm	B-000.11.216
Ear speculum Ø 3.5mm	B-000.11.217
Ear speculum Ø 4.5mm	B-000.11.218
Ear speculum Ø 5.5mm	B-000.11.219
Nose speculum Ø 10mm	B-000.11.220



**AllSpec disposable tips for BETA 100 VET\* and operating otoscope\***

Pack of 1000 pcs. Ø 2.5 mm [01]	B-000.11.128
Pack of 1000 pcs. Ø 4 mm [01]	B-000.11.127
Case of 10 packs of 1000 pcs, Ø 2,5 mm (infants)	B-000.11.138
Case of 10 packs of 1000 pcs, Ø 4 mm (adults)	B-000.11.137



Dispenser pack, single, of 250 tips, Ø 2.5 mm [02]	B-000.11.153
Dispenser pack, single, of 250 tips, Ø 4 mm [02]	B-000.11.152
Case of 10 dispenser packs of 250 tips, Ø 2.5 mm	B-000.11.151
Case of 10 dispenser packs of 250 tips, Ø 4 mm	B-000.11.150



Adaptor for AllSpec tips [03]	B-000.11.306
-------------------------------	--------------

AllSpec tip-dispenser (2x 50 tips) [04]	B-000.11.149
---	--------------

∅: Single use only.

\* instrument no longer available

Further articles / accessories

**HEINE veterinary ENT diagnostic instruments**



<b>G100 slit illumination head</b>	2.5V XHL	3.5V XHL	LED
with swivel lens, without handle	<b>G-001.21.301</b>	<b>G-002.21.301</b>	<b>G-008.21.301</b>



<b>BETA 200 VET F.O. otoscope head</b>	2.5V XHL	3.5V XHL	LED
without handle and without accessories	<b>G-001.21.250</b>	<b>G-002.21.250</b>	<b>G-008.21.250</b>



<b>Spare bulb for G100 and BETA 200 VET</b>	2.5V XHL	3.5V XHL
XHL xenon halogen spare bulb	<b>X-001.88.077</b>	<b>X-002.88.078</b>



<b>Spare bulb for operating otoscope* and BETA 100 VET*</b>	2.5V XHL	3.5V XHL
XHL xenon halogen spare bulb	<b>X-001.88.037</b>	<b>X-002.88.049</b>



<b>Swivel lens for G100 slit illumination head</b>	
Swivel lens, single	<b>G-000.21.209</b>



<b>Insufflation bulb for pneumatic testing</b>	
Insufflation bulb for BETA 200 VET and BETA 100 VET* otoscopes	<b>B-000.11.240</b>

\* instrument no longer available